

Friend



Both hands 'bent 1' handshape, palms to self in front of chest. Clench R.H. on fingers of L.H. and shake slightly.

ISL

People

♥ friend

♥ cara



More



L.H. '3' handshape, palm upwards facing outwards diagonally in front of chest. R.H. '1' handshape, palm facing downwards. Move R.H. up from L.H. in stages.

Adapted

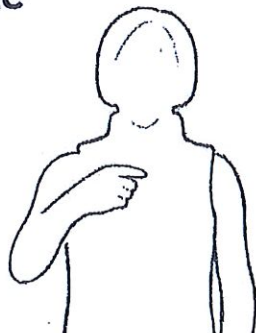
Modifier

♥ more

♥ níos mó



I / Me



R.H. 'd' handshape. Point to self.

ISL

People

♥ I/me

♥ mise



You



R.H. 'd' handshape, palm sideways. Point outwards at chest level.

ISL

People

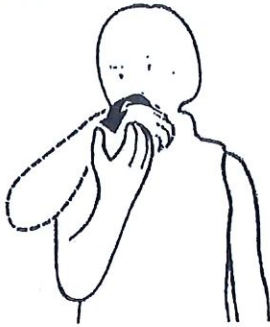
♥ you

♥ tusa



Apple

R.H. 'c' handshape, palm to self in front of chin. Rotate hand outwards and downwards.



Gesture

Object

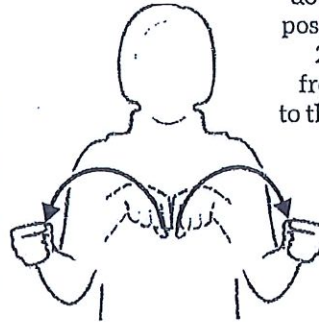
♥ apple

♥ úll



Banana

Both hands 'open 20' handshape, palms downwards. From starting position with 2 thumbs and 2 forefingers touching in front of chest move hands to the sides and downwards to palms sideways and 'closed 20' handshape.



Adapted

Object

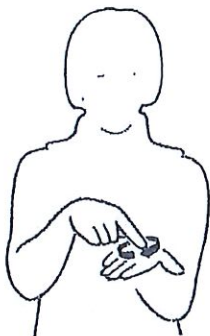
♥ banana

♥ banana



Biscuit

R.H. 'd' handshape palm downwards. L.H. 'T' handshape palm upwards facing outwards diagonally in front of chest. Make a circle with tip of right forefinger in clockwise direction on palm of L.H. once.



ISL

Object

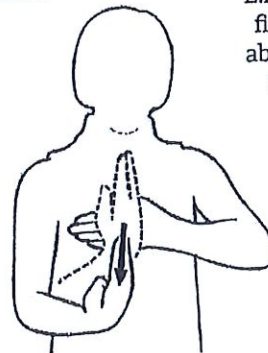
♥ biscuit

♥ brioscaí



Bread

Both hands 'T' handshape. L.H. facing body with fingers sideways just above stomach. Move R.H. palm sideways with little finger touching down knuckles of L.H.



ISL

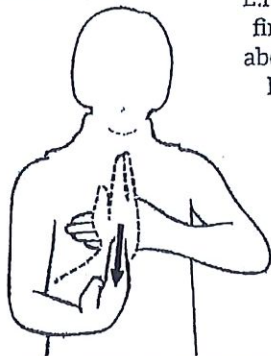
Object

♥ bread

♥ arán



Bread



Both hands 'T' handshape.
L.H. facing body with
fingers sideways just
above stomach. Move
R.H. palm sideways
with little finger
touching down
knuckles of L.H.

ISL

Object

♥ bread

♥ arán



Cake



L.H. 'T' handshape
palm facing upwards.
R.H. 'bent 5' palm
facing downwards.
Place R.H. on palm of
L.H. held in front
of chest.

ISL

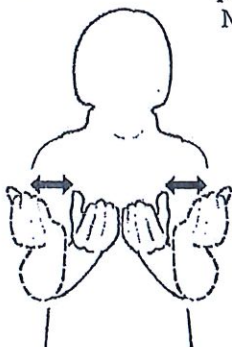
Object

♥ cake

♥ cáca milis



Chocolate



Both hands 'c' handshape,
palms up in front of chest.
Move hands to meet each
other in centre and
out again.

ISL

Object

♥ chocolate

♥ seacláid



Sandwich



Both hands 'T'
handshape, palms
upwards, fingers
forwards in front of
chest. Place R.H. 'T'
handshape, palm
downwards on
top of L.H.

ISL

Object

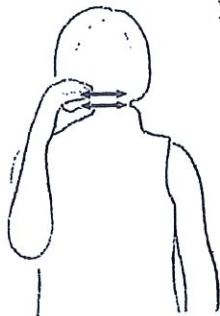
♥ sandwich

♥ ceapaire



Ice Cream

R.H. 'bent l' handshape, palm facing sideways. Move over and back in front of chin.



Adapted

Object

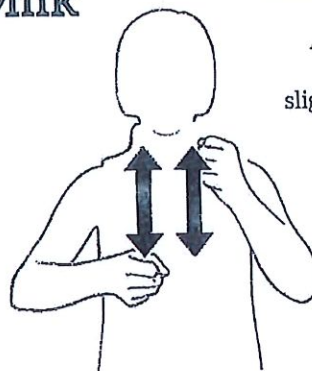
🧡 ice cream



💚 uachtar reoite

Milk

Both hands 's' handshape, palms facing self. Alternately move the hands up and down slightly in front of chest while opening and closing them as if milking a cow.



ISL

Object

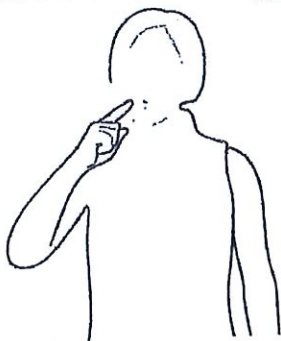
🧡 milk



💚 bainne

Sweet

R.H. 'd' handshape, palm to self. Place tip of forefinger at right side of mouth. Swivel wrist.



ISL

Object

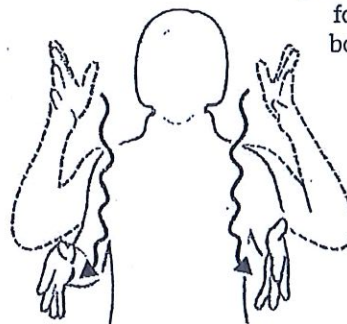
🧡 sweets



💚 milseáin

Water

Both hands '5' handshape, palms sideways fingers forwards in front of body. Flicker fingers as move hands up and down.



Adapted

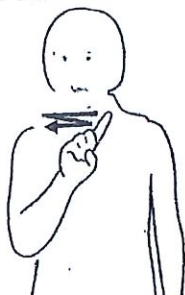
Object

🧡 water



💚 uisce

Be Careful



R.H. 'd' handshape, palm outwards in front of chin. Move index finger over and back. Use appropriate facial expression.

Gesture

Social

♥ Be careful.

♥ Bí cúramach.



Dirty



L.H. 'T' handshape, palm facing upwards in front of chest. R.H. 'o' handshape, palm facing downwards. Move R.H. from palm of L.H. to right space changing to '5' handshape. Use appropriate facial expression.

Adapted

Modifier

♥ dirty

♥ salach



Help, to



L.H. 'T' handshape, palm facing upwards in front of chest. Place R.H. 's' handshape, palm sideways on palm of L.H. Move left hand up and out slightly.

Adapted

Action

♥ Help me.

♥ Cuidigh liom.



Stop, to



L.H. 'T' handshape, palm up facing forwards diagonally at chest level. R.H. 'T' handshape, palm sideways. Bring edge of R.H. down on left palm.

ISL

Action

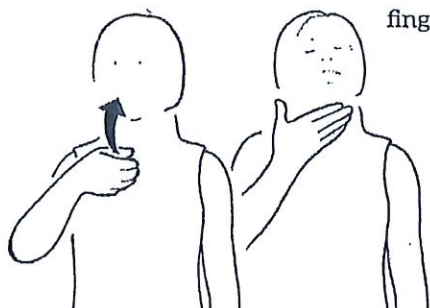
♥ Stop.

♥ Stad.



Thirsty

Sign 'drink' then tap
R.H. 'T' handshape,
palm to self,
fingers sideways
on throat.



Adapted

Modifier

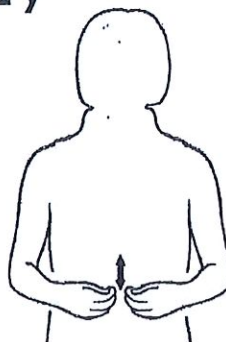
♥ I'm thirsty.

♥ Tá tart
orm.



Hungry

Both hands 'o'
handshape,
palms to self.
Rub up and
down together
slightly, on
stomach
repeatedly.



Adapted

Modifier

♥ I'm hungry.

♥ Tá ocras
orm.



Sick

Place R.H. 'T' handshape, palm
to self, fingers sideways,
on forehead and make
appropriate facial
expression.



ISL

Modifier

♥ I'm sick.

♥ Tá mé
tinn.



Cry, to

Both hands 'd' handshape,
palms to self. Alternately
move forefingers
down the cheeks.



ISL

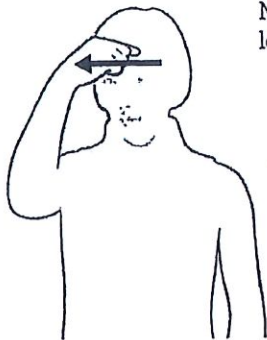
Action

♥ I'm crying.

♥ Táim ag
gol..



Angry



R.H. 'd' handshape, palm facing downwards. Move index finger from left to right on forehead while frowning.

Adapted

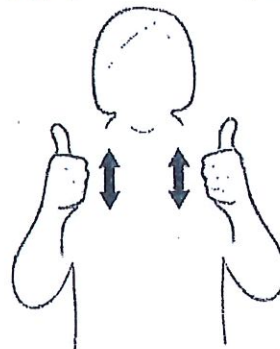
Modifier

♥ I'm angry.

♥ Tá fearg orm.



Happy



Both hands 'a' handshape, palms facing each other. Move up and down together in front of chest twice.

Adapted

Modifier

♥ I'm happy.

♥ Tá athas orm.



Scared / Afraid



Hold nails of R.H. palm to self just below lower lip. Lift shoulders and make appropriate facial expression.

Adapted

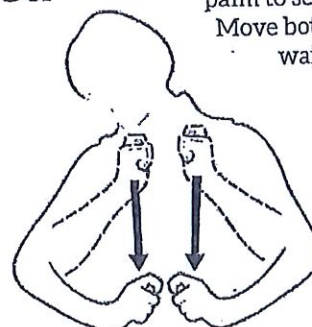
Modifier

♥ I'm scared.

♥ Tá eagla orm.



Tired



Both hands 't' handshape, palm to self on upper chest. Move both hands down to waist level. Tilt head to the side.

ISL

Modifier

♥ I'm tired.

♥ Tá tuirse orm.



Hot

R.H. 'I' handshape, palm facing self. Move across forehead from left to right, then flick hand out to side changing to '5' handshape, palm down.



Adapted

Modifier

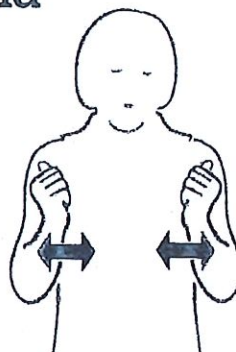
hot

té



Cold

Both hands 'a' handshape, palms sideways at chest level. Shake the hands slightly.



ISL

Modifier

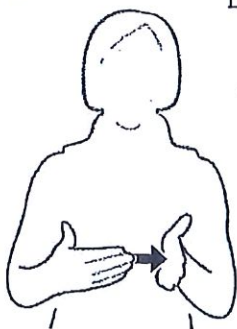
cold

fuar



Yes

Both hands 'I' handshape. L.H. palm sideways, fingers forwards and R.H. palm to self, fingers sideways in front of body. Tap right fingertips on left palm and nod head.



ISL

Social

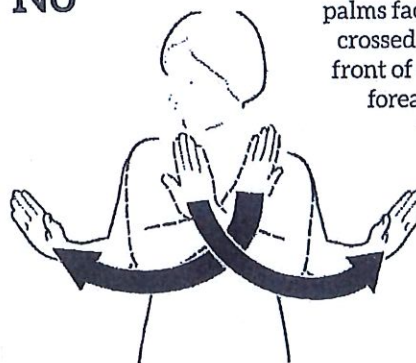
yes

sea/tá



No

Both hands 'I' handshape, palms facing outwards, crossed at forearms in front of chest. Uncross forearms outwards while shaking head.



Adapted

Social

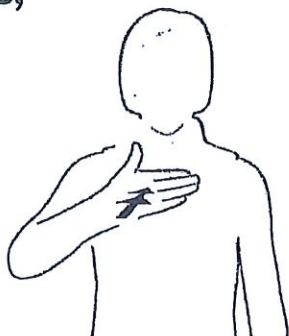
no

níl



**Like,
to**

R.H. 'I' handshape, palm to self. Tap upper chest twice.



ISL

Action

♥ I like...

♥ Is maith liom...



**Play,
to**

Both hands 'I' handshape, palms to self at chest level. Flick little fingers off each other as the hands are moved in and out from body alternately.



ISL

Action

♥ play(ing)

♥ (ag) súgradh



Toilet

Hold R.H. 'I' handshape, palm outwards and fingers upwards in front of right shoulder.

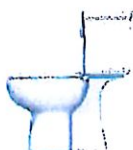


ISL

Object

♥ toilet

♥ leithreas



**Wash,
to**

Both hands 'a' handshape with L.H. palm upwards and R.H. palm downwards in front of chest. Move R.H. over and back across L.H.



ISL

Action

♥ wash

♥ nigh

